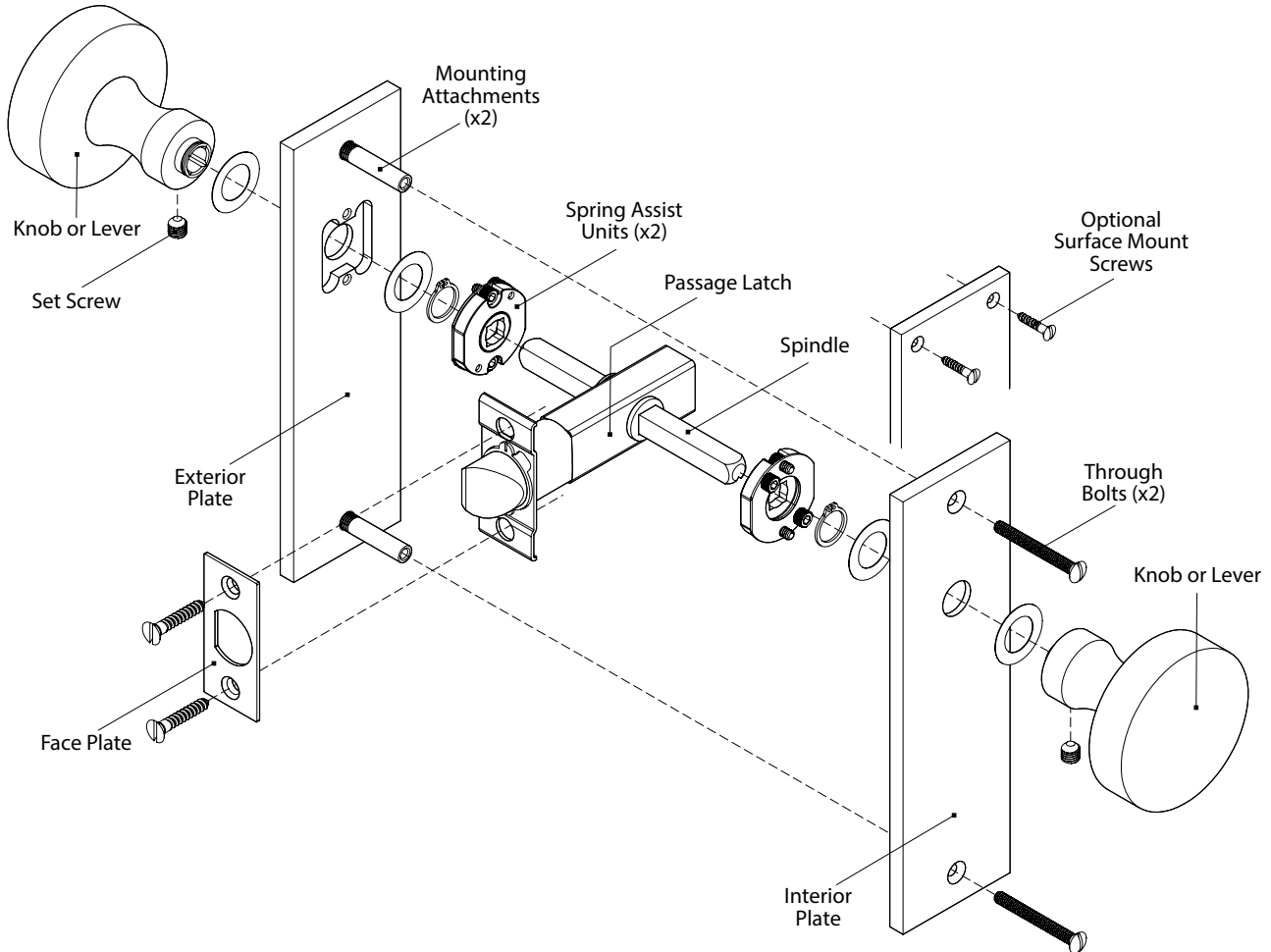




**WATER STREET.**  
JAMESTOWN NEW YORK

## TE-PS - TUBULAR ESCUTCHEON PASSAGE SET



(Figure 1)

### ESCUTCHEON MOUNTING & ORIENTATION

The set is shown with the passage latch high on the plate. Depending on your door preparation, the latch may be located low on the plate.

Escutcheon plates are typically mounted with through bolts but surface mount screws can be used. If this is the case, use the plates as templates to mark the door for pilot holes.

### PASSAGE SET

A tubular passage set consists of a tubular passage latch only.

- The interior plate has a knob or lever, and exposed through bolt screws.
- The exterior plate has a knob or lever, and mounting attachments.

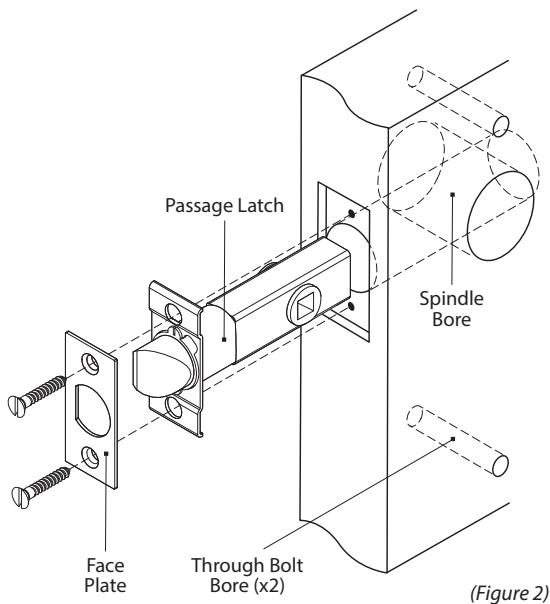


## TE-PS - TUBULAR ESCUTCHEON PASSAGE SET

### PREPARE DOOR, INSERT LATCH & BOLT

1. Determine the desired location of the passage latch on your door. Prepare the door according to the template provided.
2. Use the face plates to mark the screw locations on the edge of the door, then drill pilot holes (x2).
3. Install the latch sub-plate onto the latch. Rotate the latch bolt to the desired direction based on handing, then insert the assembly into the door.
4. Install the latch face plate and screws.

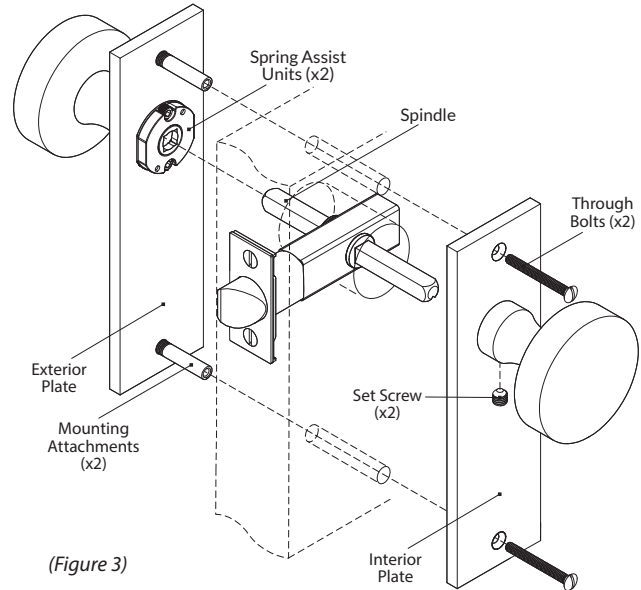
Do not over tighten the face plate screws at this time, as some adjustment may be necessary. (Figure 2)



(Figure 2)

### INSTALL THE HARDWARE

6. Center the spindle within the latch body. The set screw slots should be on the bottom, facing the floor.
7. Fit the exterior plate spring assist unit and knob or lever onto the spindle. Position the plate assembly on the door by inserting the mounting attachments through the holes drilled for them.
8. Repeat the process with the interior plate assembly by sliding the spring assist unit and knob or lever onto the spindle.
9. With both plates in position on the door, secure them together by inserting the through bolts and tightening, or by installing the surface mount screws. (Figure 3)
10. Test the function of the latch. If binding occurs, loosen the face plate screws slightly until smooth operation is achieved.
11. Secure the knobs or levers to the spindle by tightening the set screws.



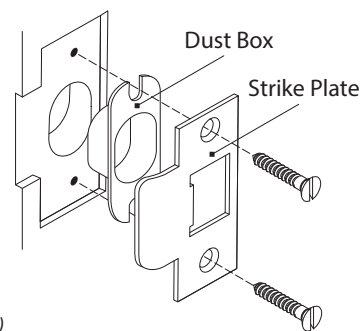
(Figure 3)

### DOOR JAMB

12. Measure the jamb to determine the locations the latch bolt strikes when the door is fully closed. Using the strike plate template provided, prepare the door jamb to accept the dust box and strike plate.

Note: Determine if the latch strike plate is a full lip or T-strike, and the handing required. Mortise the jamb accordingly.

13. Install the dust box and face plate with the screws provided. Make sure the face plate sits flush with the jamb surface; deepen the cavities as needed. After installation, if the latch does not fully engage with the strike, loosen the screws and adjust. (Figure 4)



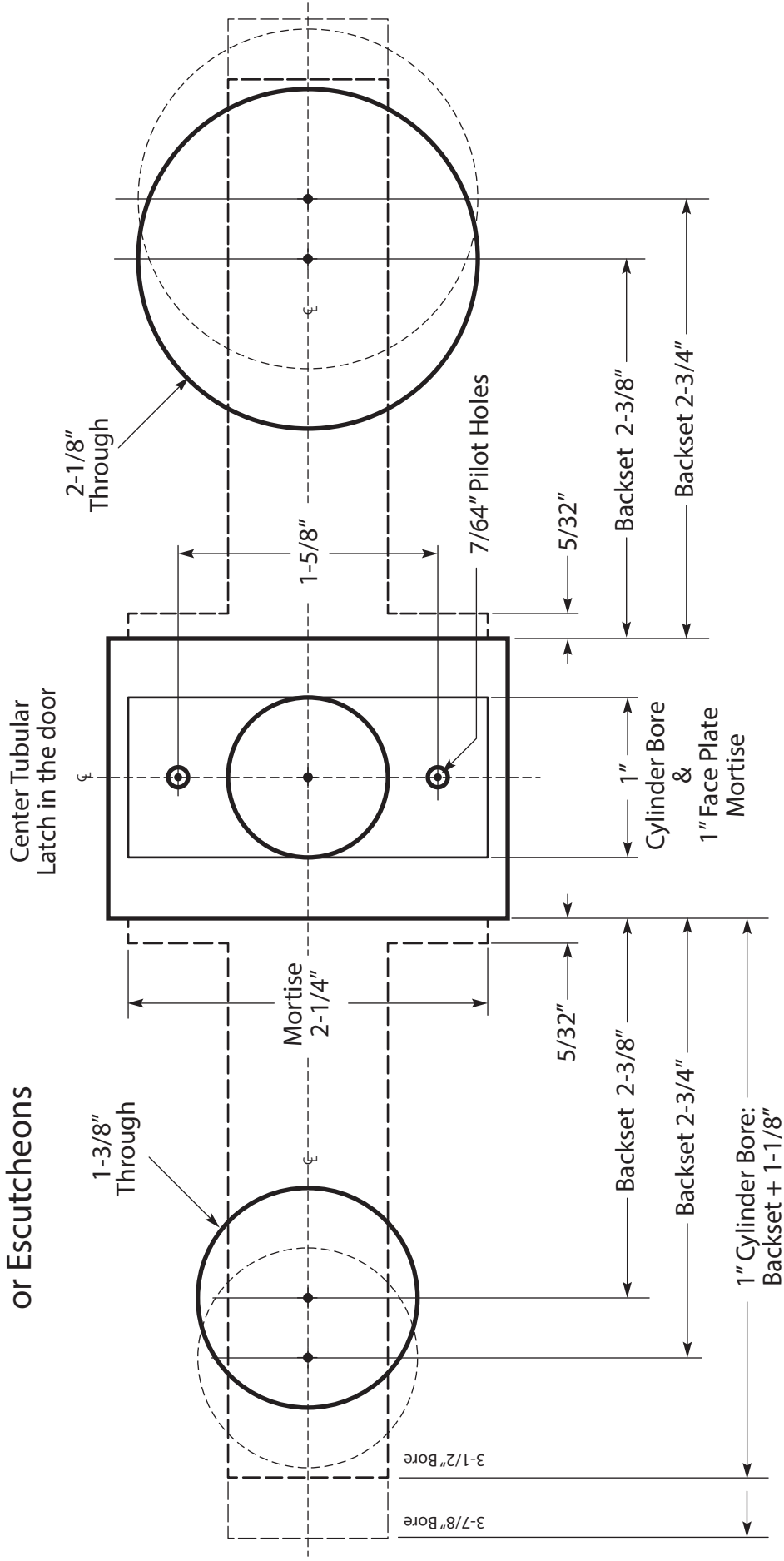
(Figure 4)



WATER STREET

### Solid Door - Small Rosettes or Escutcheons

### Pre-Drilled Adapter / Spring Assist



Proprietary And Confidential

© WSB Hardware, Inc. 2023

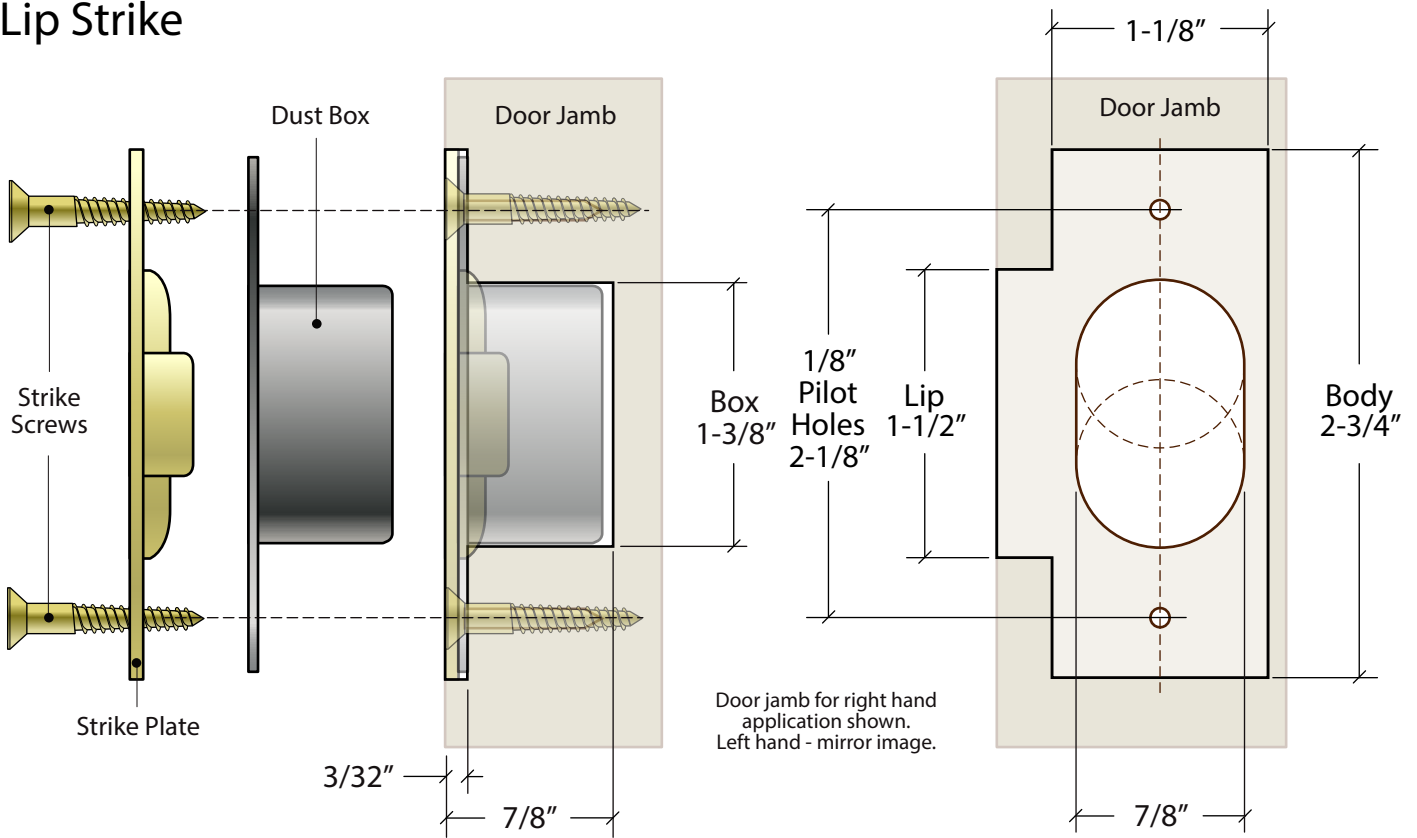
Any reproduction in part or as a whole without the written permission of Water Street Brass is prohibited.

WS40300-138  
Tubular Passage Latch

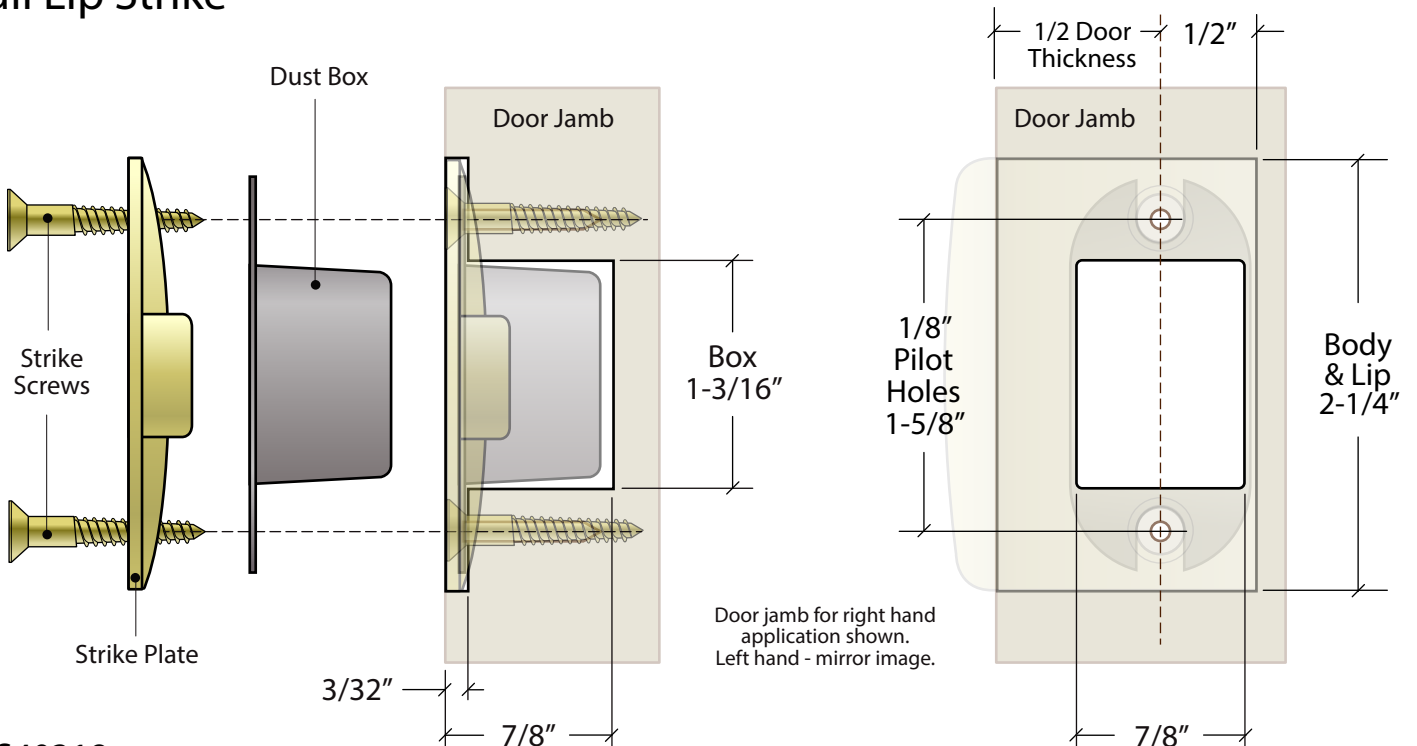


WATER STREET

## T-Lip Strike



## Full Lip Strike



WS40318  
Tubular Strike Templates

Proprietary And Confidential  
© WSB Hardware, Inc. 2022