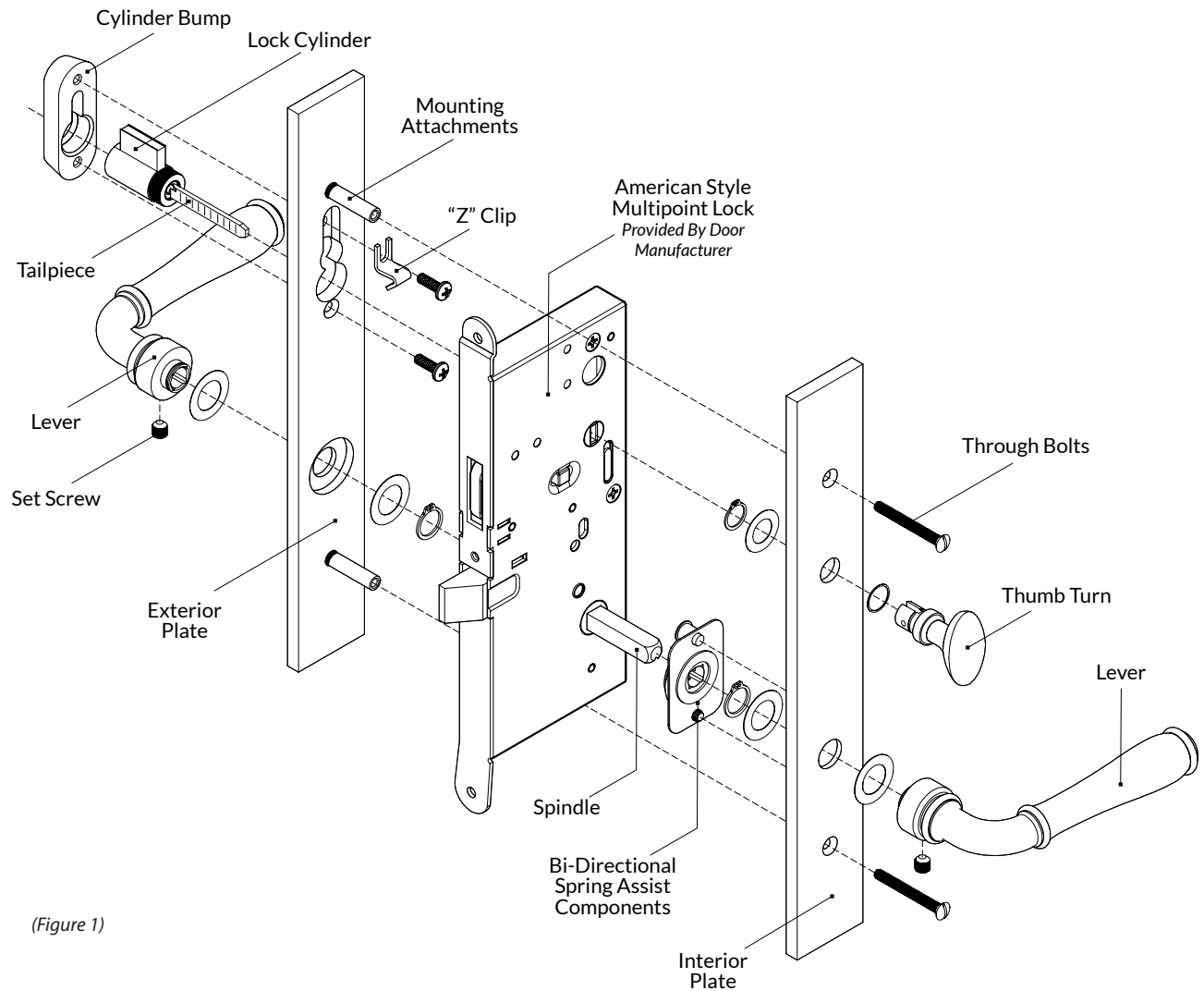




## EAMP-EN - AMERICAN MULTIPOINT ENTRY SET



(Figure 1)

### PREPARE DOOR

Prior to ordering hardware sets, a multipoint check sheet must be submitted so the hardware is configured to match the door.

Multipoint locks come pre-installed on exterior doors, so the only preparation that should be necessary is for the bi-directional spring assist units. When preparing the door, **Extreme Care** must be exercised not to damage the lock body.

In some cases, the spring assist unit may be installed on the exterior plate, or on both plates.

1. Using the template provided, prepare the door to accept the bi-directional spring assist unit.

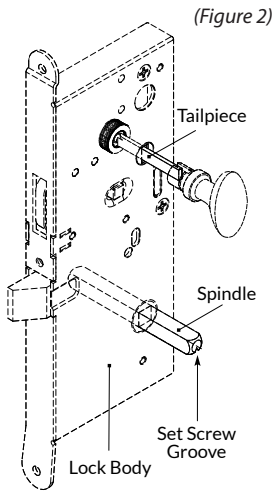
### ENTRY SET

A multipoint escutcheon entry set features an American style cylinder lock body operated by levers only.

- The exterior plate has two mounting attachments, an attached active lever, a key cylinder, and a cylinder mounting bump. The door can be locked or unlocked from the outside.
- The interior plate has two through bolts, a spring assist unit, an attached active lever, and attached thumb turn. The door can be locked or unlocked from the inside.



## EAMP-EN - AMERICAN MULTIPOINT ENTRY SET



### INSTALL THE SPINDLE

- Slide the spindle into the lock hub, centering in the lock body. Make sure the set screw groove is on the bottom, facing the floor.
  - While holding the spindle in place, position the exterior plate assembly into the door, sliding the lever onto the spindle and the cylinder tailpiece through the lock body. (Figure 2)
- When the plate is firmly against the door surface, tighten the lever set screw, securing the spindle in lever.

### CUT THE TAILPIECE

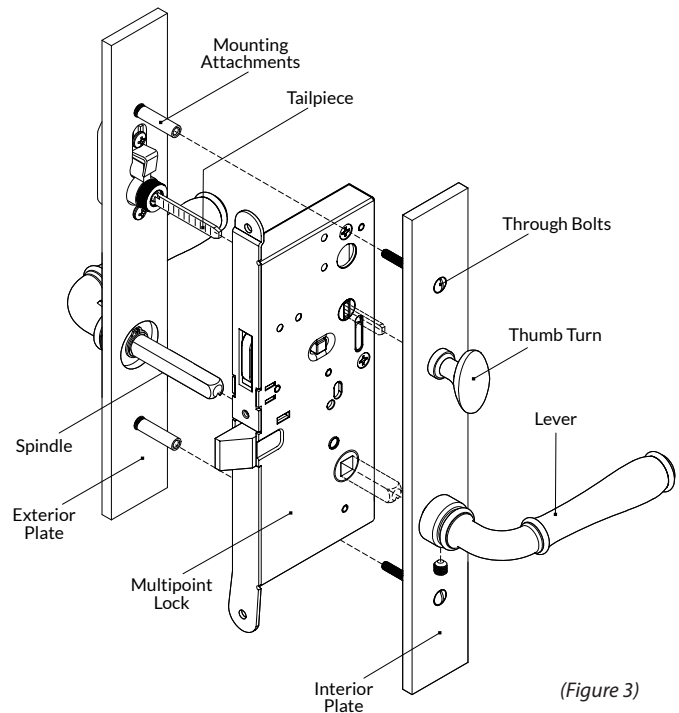
- While the exterior plate is still in place, measure and mark the cylinder tailpiece to a length so that it will engage with the slot in the thumb turn, but does not bind when both plates are attached. (Figure 2)

Note: The tailpiece slot in the lock may be vertical or horizontal. Prior to installation, orient the tailpiece on the lock cylinder to match this slot.

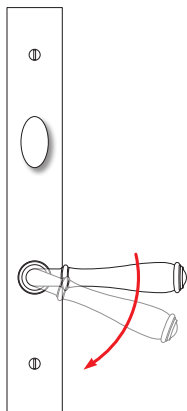
- Remove the exterior plate from the lock body. Cut the tailpiece at the marked location.

### INSTALL THE HARDWARE

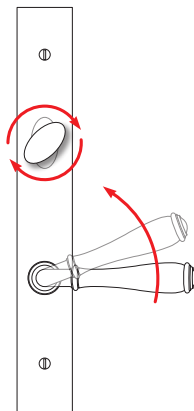
- Reinstall the exterior plate on the door, with the spindle and tailpiece passing through the lock body.
  - Install the interior plate by sliding the spindle through the spring assist unit and into the interior lever. The slot in the thumb turn must also engage the tailpiece.
- Snug the plate to the door surface, then install the two through bolts into the exterior plate mounting attachments. (Figure 3)
- When properly positioned, the thumb turn will rotate the tailpiece and activate the locking mechanism. A key will rotate the tailpiece from the exterior side of the door.
- Square the plates to the edge of the door, then test the function of the levers and the lock cylinder. When satisfied that the lock is functioning properly, firmly tighten the through bolts.
  - Complete the installation by tightening the set screw on the interior lever.



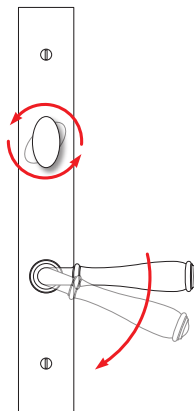
Operate Latch



Lock Bolts



Unlock Bolts



(Figure 4)

### OPERATING THE DOOR

On Multipoint doors, the latching mechanism on an unlocked door is activated by pushing the lever down.

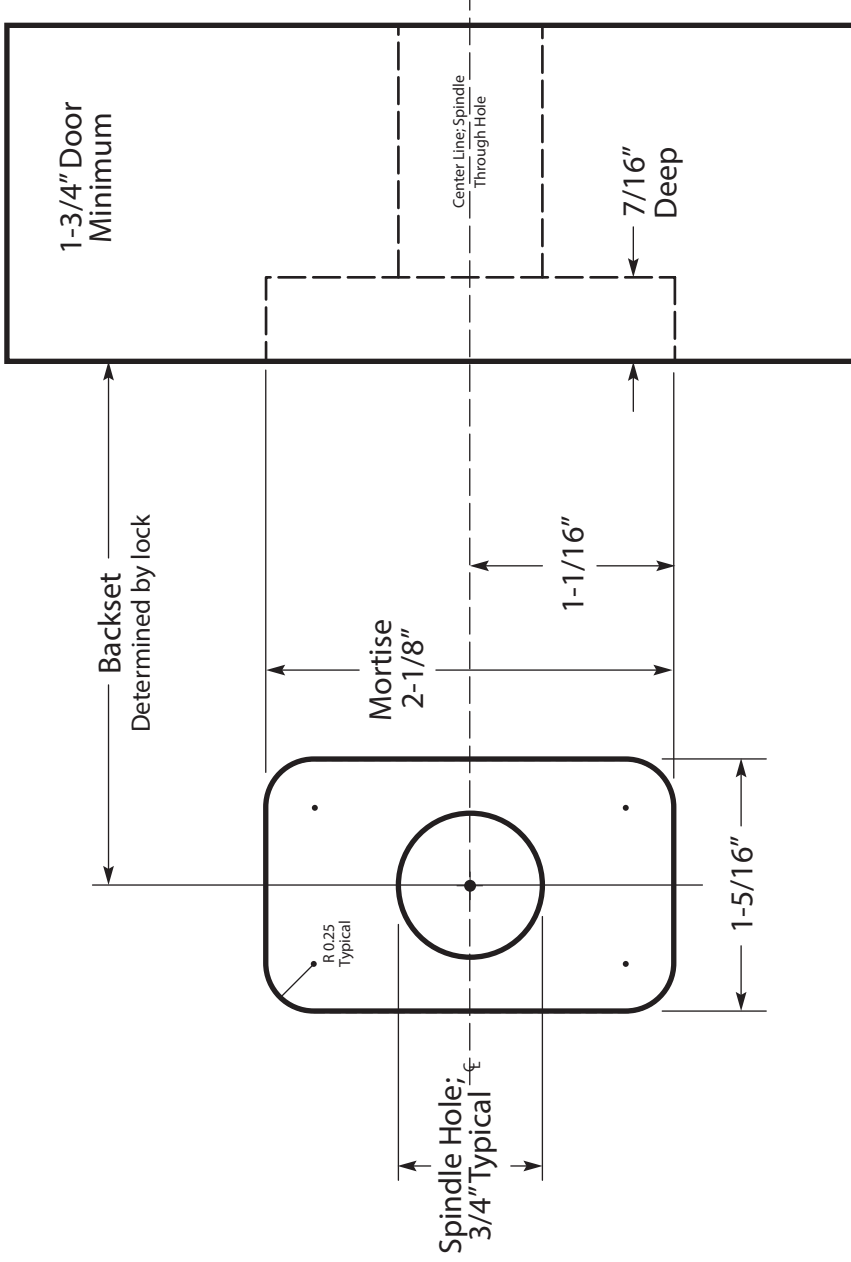
The locking mechanism is activated by pulling the lever up, then turning the thumb turn in a clockwise direction.

To unlock the door, press down on the lever then turn either the thumb turn or key. (Figure 4)

Make sure these functions are working properly with your new hardware. If the hardware does not operate by this method, consult the lock instructions provided by the door manufacturer.



WATER STREET



This preparation is for a bi-directional spring assist installed on **WOODEN** or **METAL CLAD** multipoint doors.

The door is already drilled and mortised for the lock being used. This additional mortising instruction is for the spring assist only. Examine your hardware and determine which side of the door will be housing the spring assist. Drill and mortise accordingly.

**Extreme care must be taken not to damage the pre-installed lock body in any way!** If possible, remove the lock body prior to drilling and replace after assuring the spring assist fits in the new cavity. Water Street Brass is in no way responsible for damage to your door or lock as a result of the door preparation.

WS40202

Bi-Directional Spring Assist  
Multipoint Door Preparation

